

# A Financial Crisis is a Terrible Thing to Waste

David Flanagan

[dtflan1234@aol.com](mailto:dtflan1234@aol.com)

207-724-2041

# So How Are We Doing?

---

## National Assessment of Education Progress (NAEP)

### 4<sup>th</sup> Grade Reading Proficiency Maine's Ranking

1998            4<sup>th</sup> ranking

2007            10<sup>th</sup> ranking

### 8<sup>th</sup> Grade Mathematics Proficiency Maine's Ranking

1996            1<sup>st</sup> ranking

2007            24<sup>th</sup> ranking

# So How Are We Doing?

---

- 2008 SAT – Test Scores

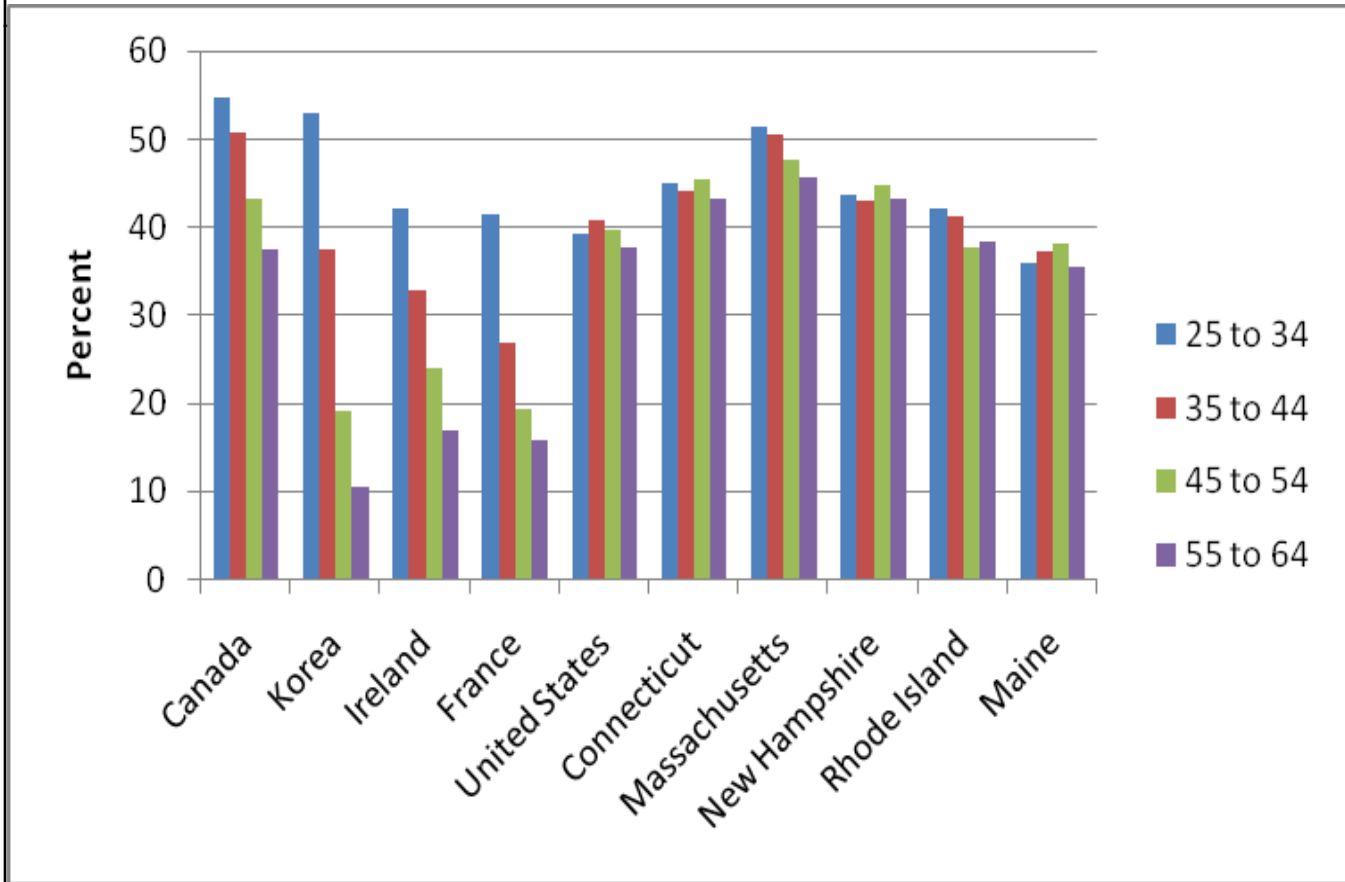
	Critical Reading	Mathematics	Writing
• National	502	515	494
• Maine	469	466	461

---

- Maine vs

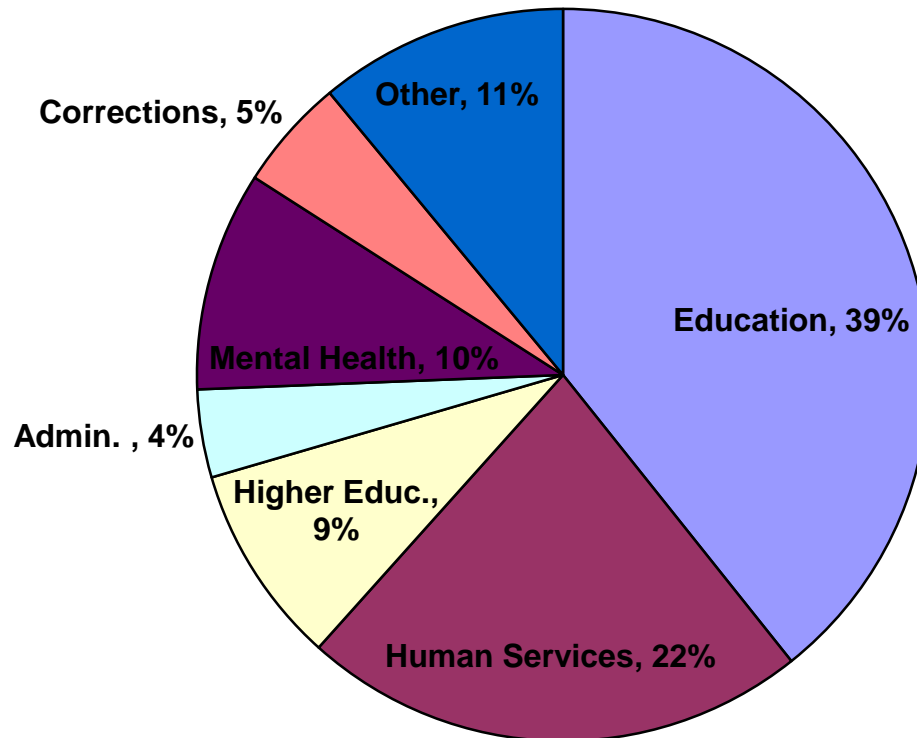
• National	(-33)	(-49)	(-33)
------------	-------	-------	-------

## Percent of Adults with Associate Degree or Higher by Age Groups Leading OECD Countries, U.S. and New England States, 2006



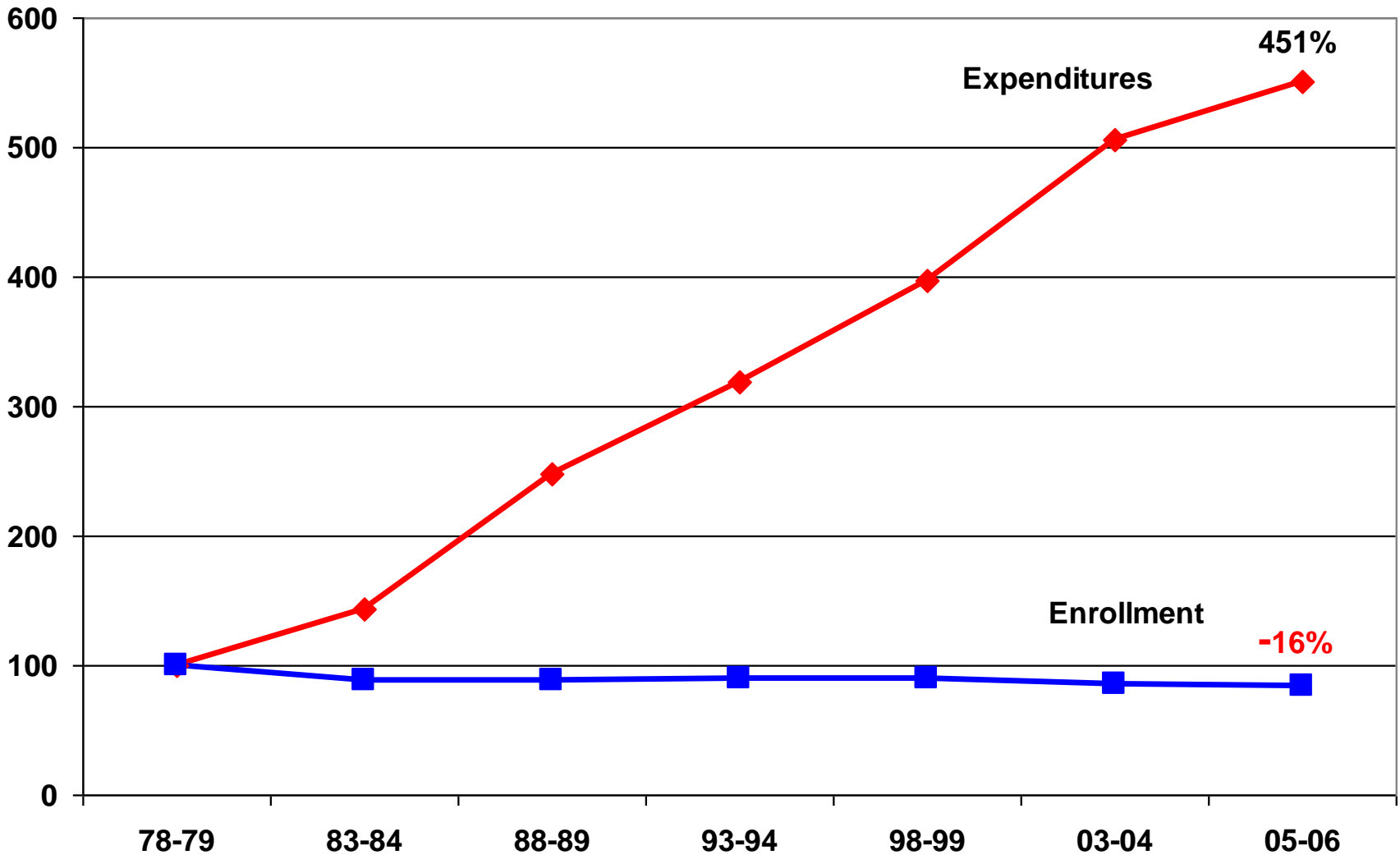
Source: OECD, Education at a Glance 2008 (2006 data for countries) and U.S. Census, American Community Survey, 2006.

## Maine State Expenditures (2008 General Fund)



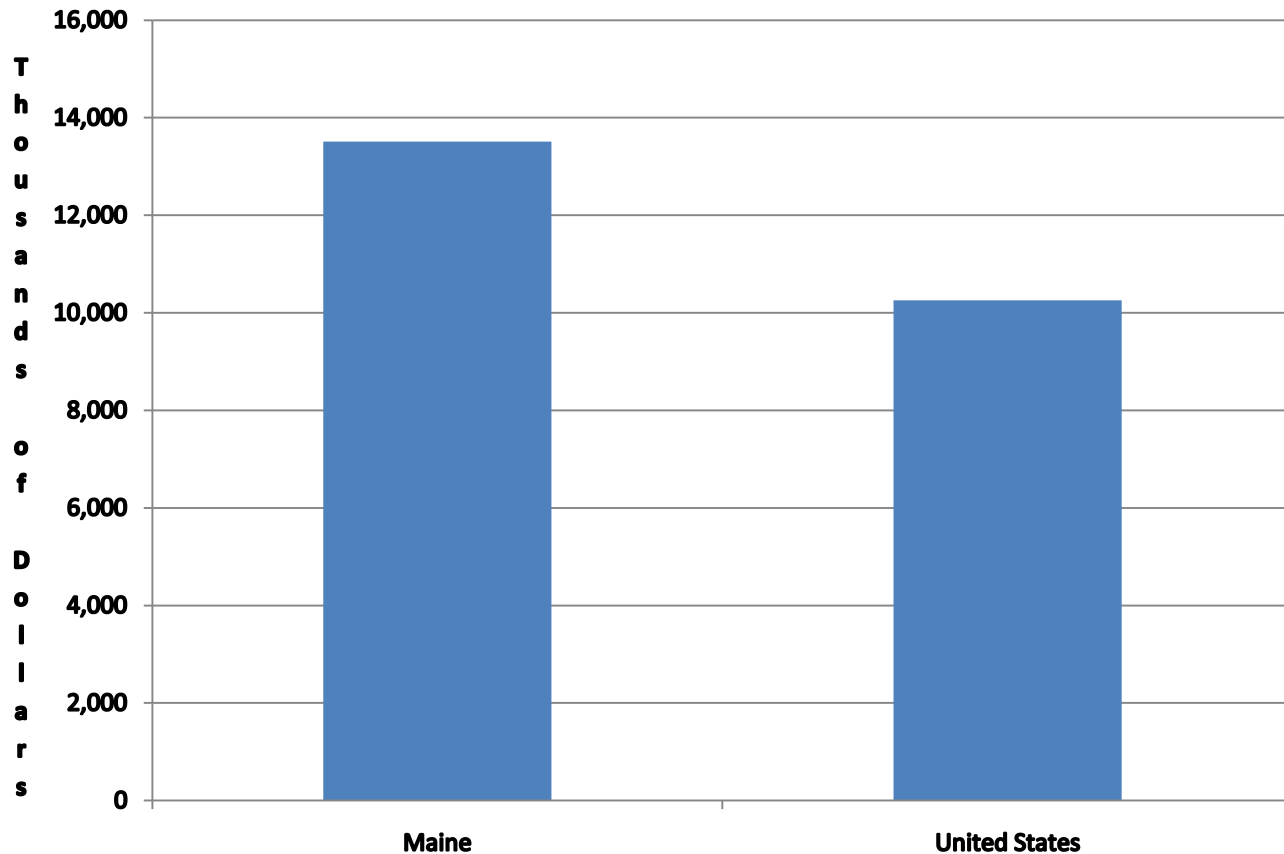
Source data: STATE of MAINE Compendium of State Fiscal Information, 2008

# Nominal K-12 Expenditures vs K-12 Enrollment Indexed to 1978-79 =100



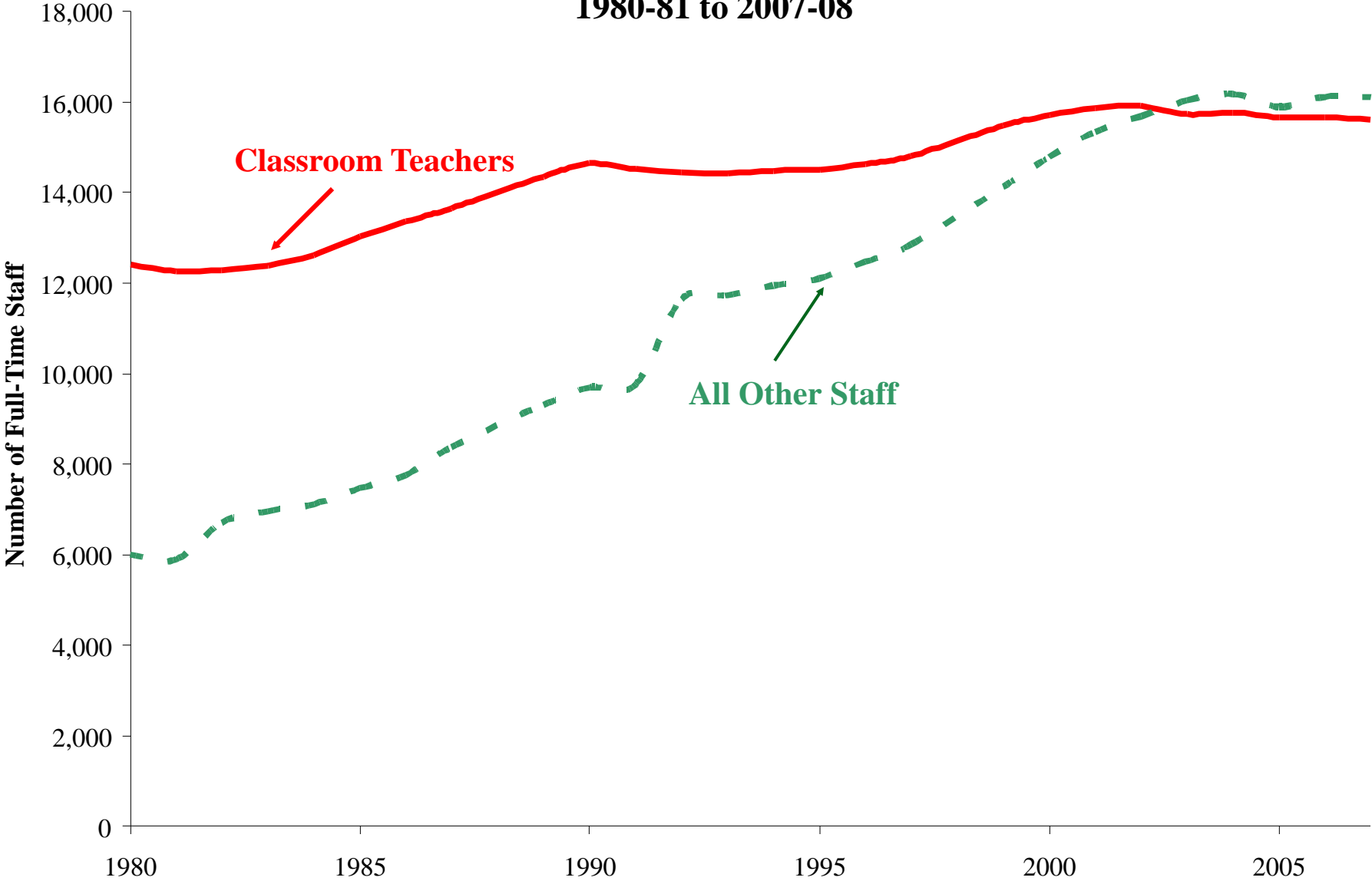
Source: Maine Development  
Foundation

## Estimated Per-Pupil Public K-12 Expenditures, 2008



Source: CQ Fact Finder, 2009, p. 143

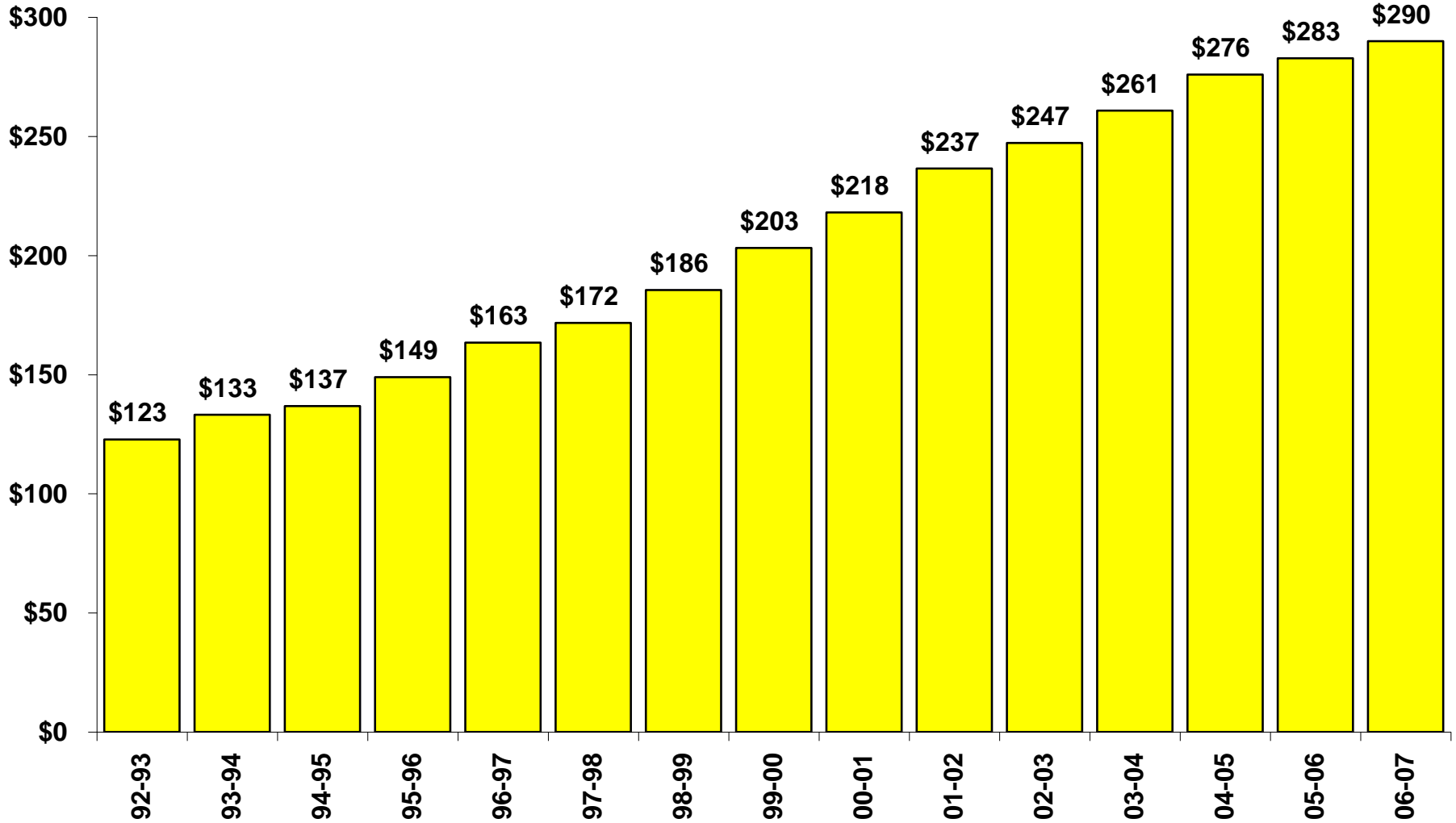
# Maine Public School Staff 1980-81 to 2007-08



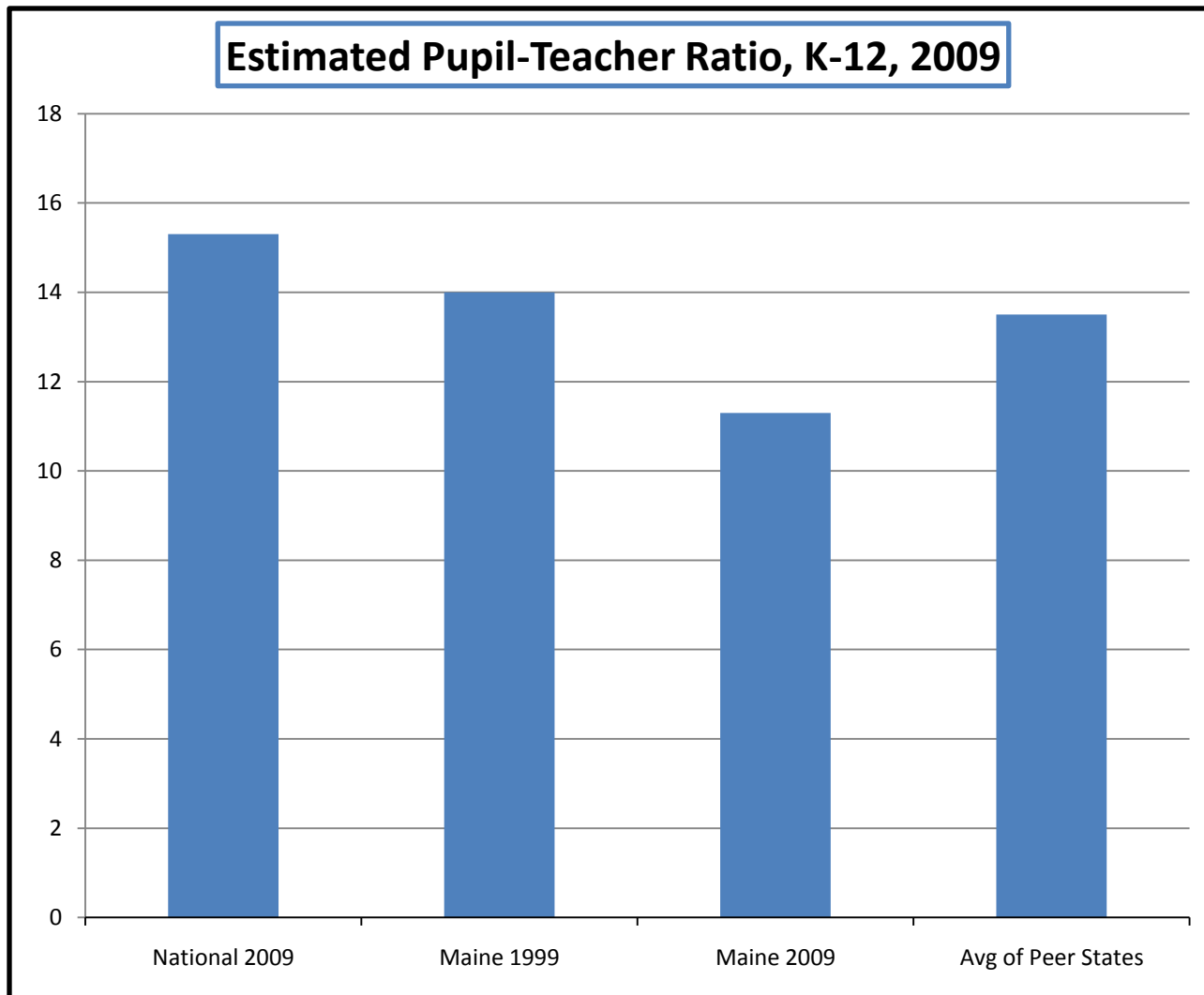
Source: Maine Development Foundation



## Statewide Special Education Expenditures (in millions of \$)

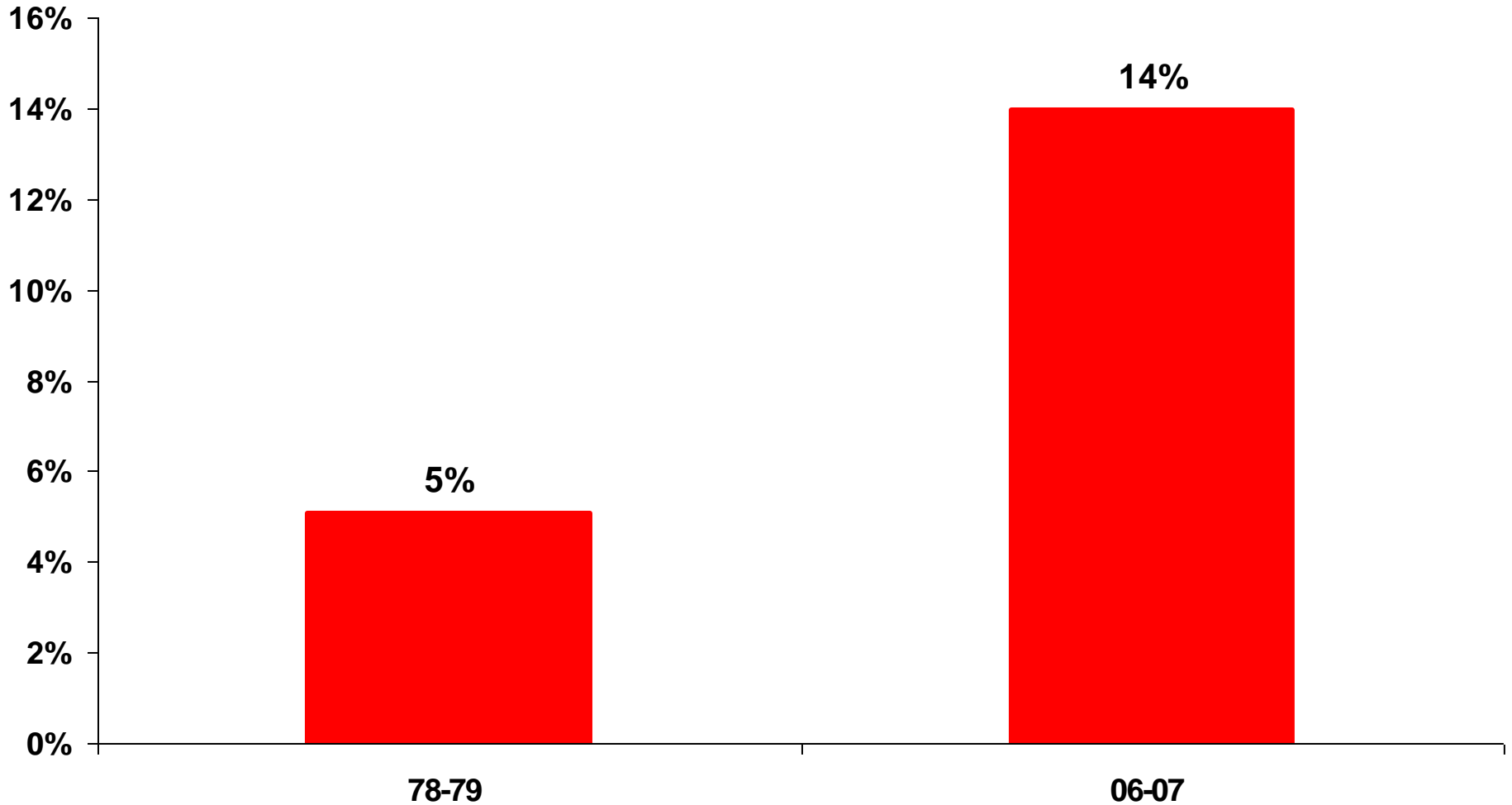


Source: Maine Development  
Foundation

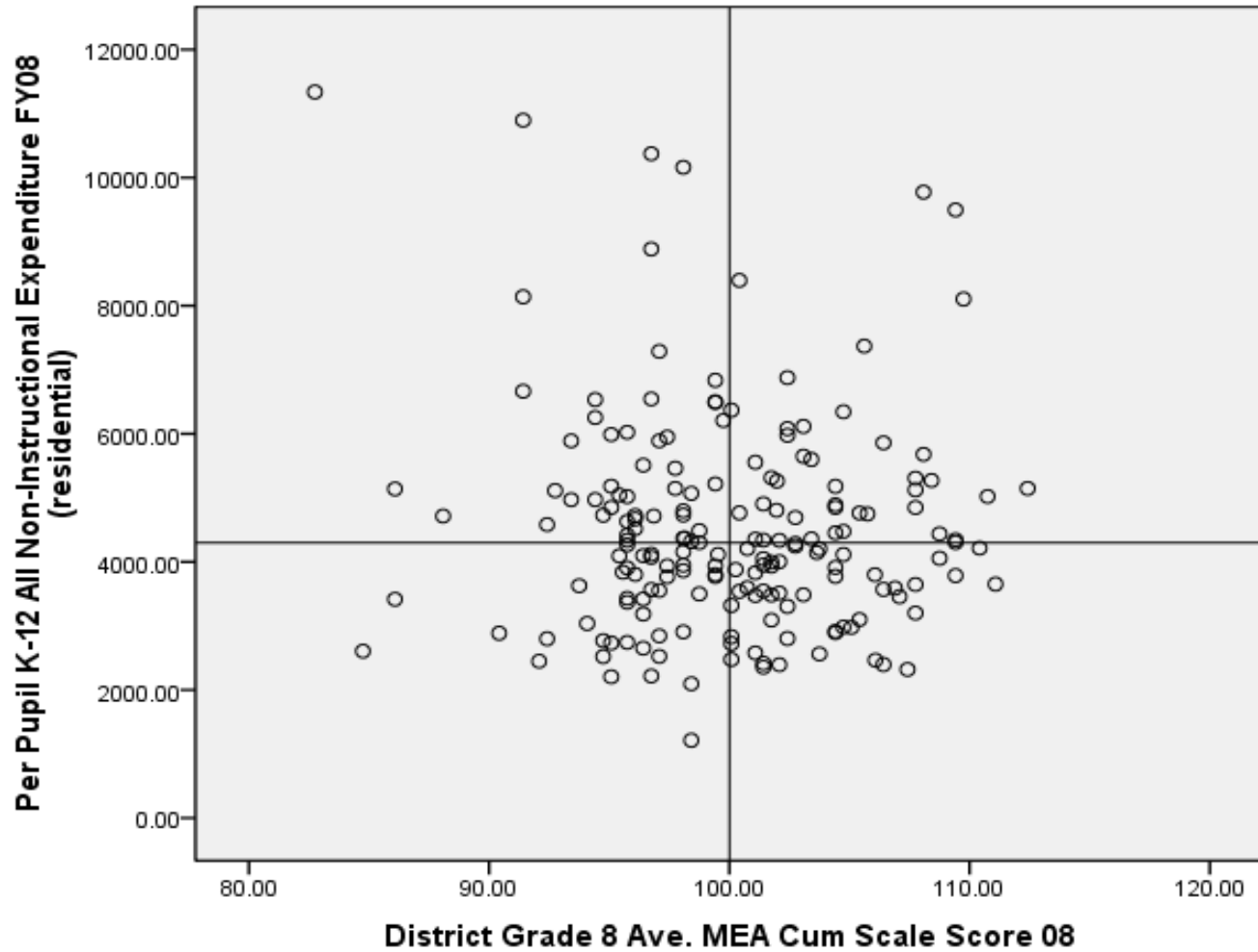


Source::CQ Fact Finder 2009, p. 143

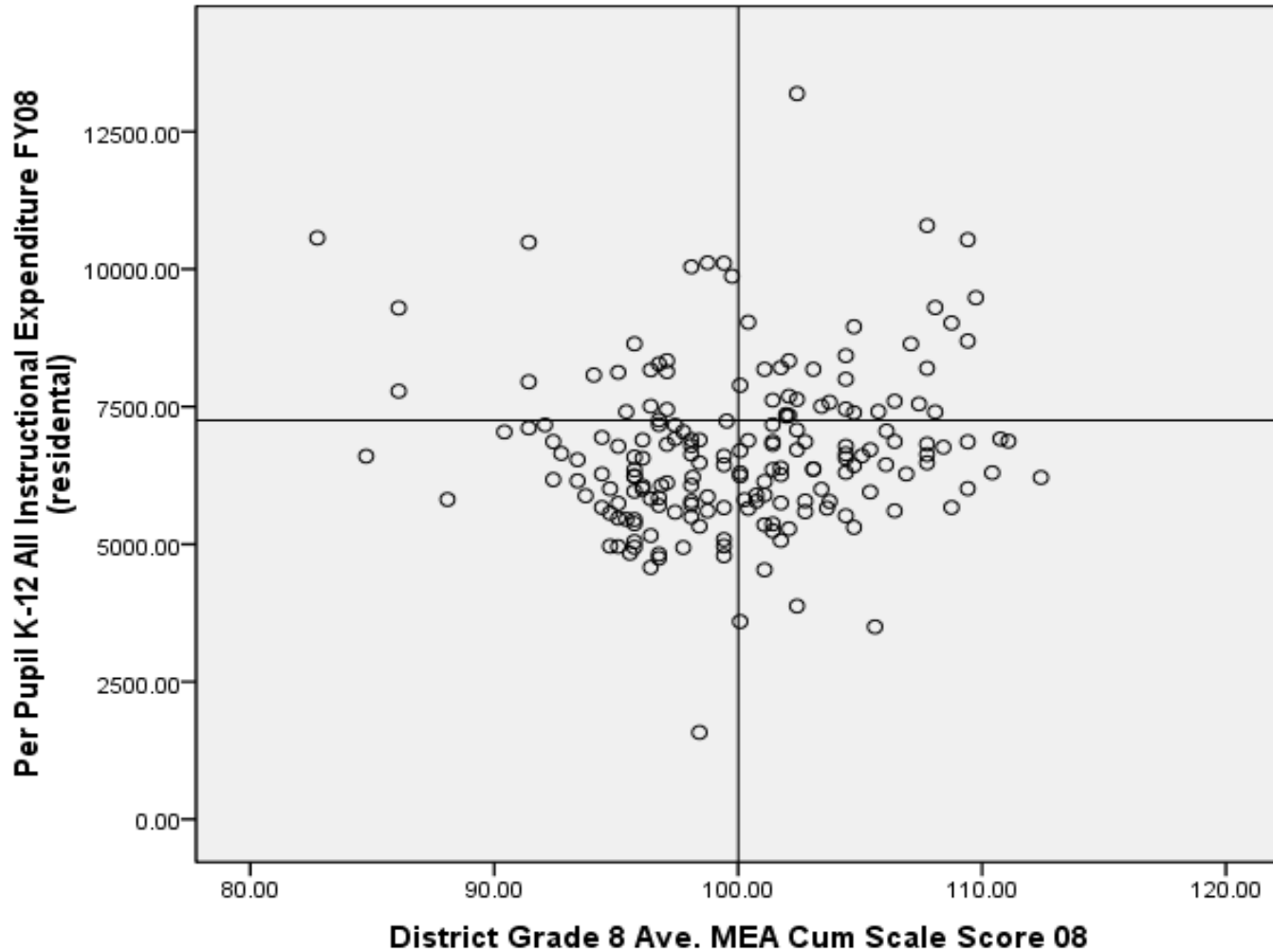
## K-12 Special Ed Expenditures as % of Total K-12 Expenditures



Source: Maine Development  
Foundation



Source: Dr. David Silvernail, MEPRI,  
08/09

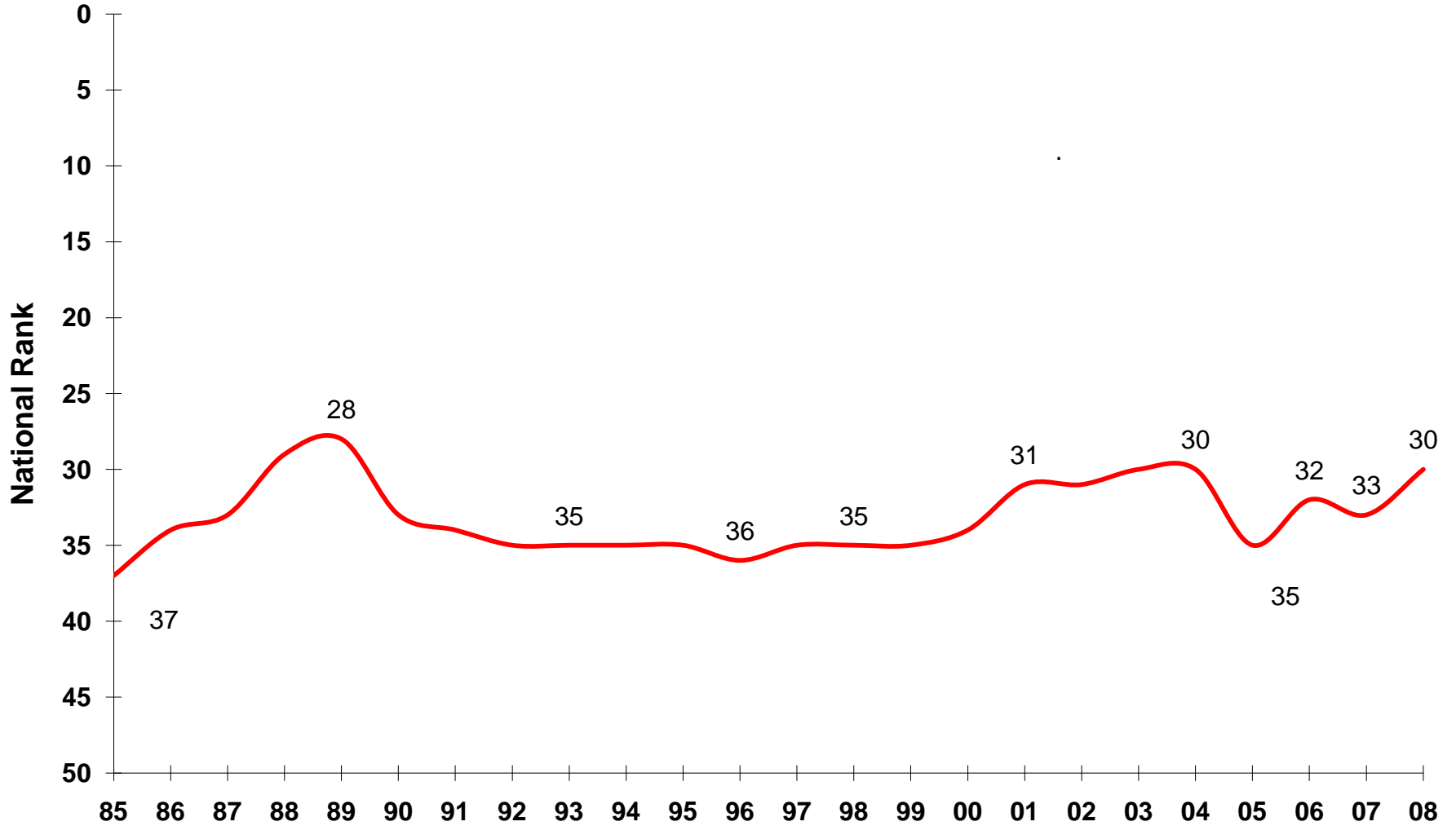


Source: Dr. David Silvernail, MEPRI,  
08/09

<b>Factor</b>	<b>Per Pupil Total Expenditure</b>	<b>Per Pupil Instructional Expenditures</b>	<b>Per Pupil Non-Instructional Expenditures</b>	<b>Distrace Average Grade MEA Performance</b>
Per Pupil Expenditures	1	0.68	0.83	0.01
Per Pupil <b>Instructional</b> Expenditures		1	0.05	0.12
Per Pupil <b>Non-Instructional</b> Expenditures			1	-0.07
District Average 8th Grade MEA Performance				1

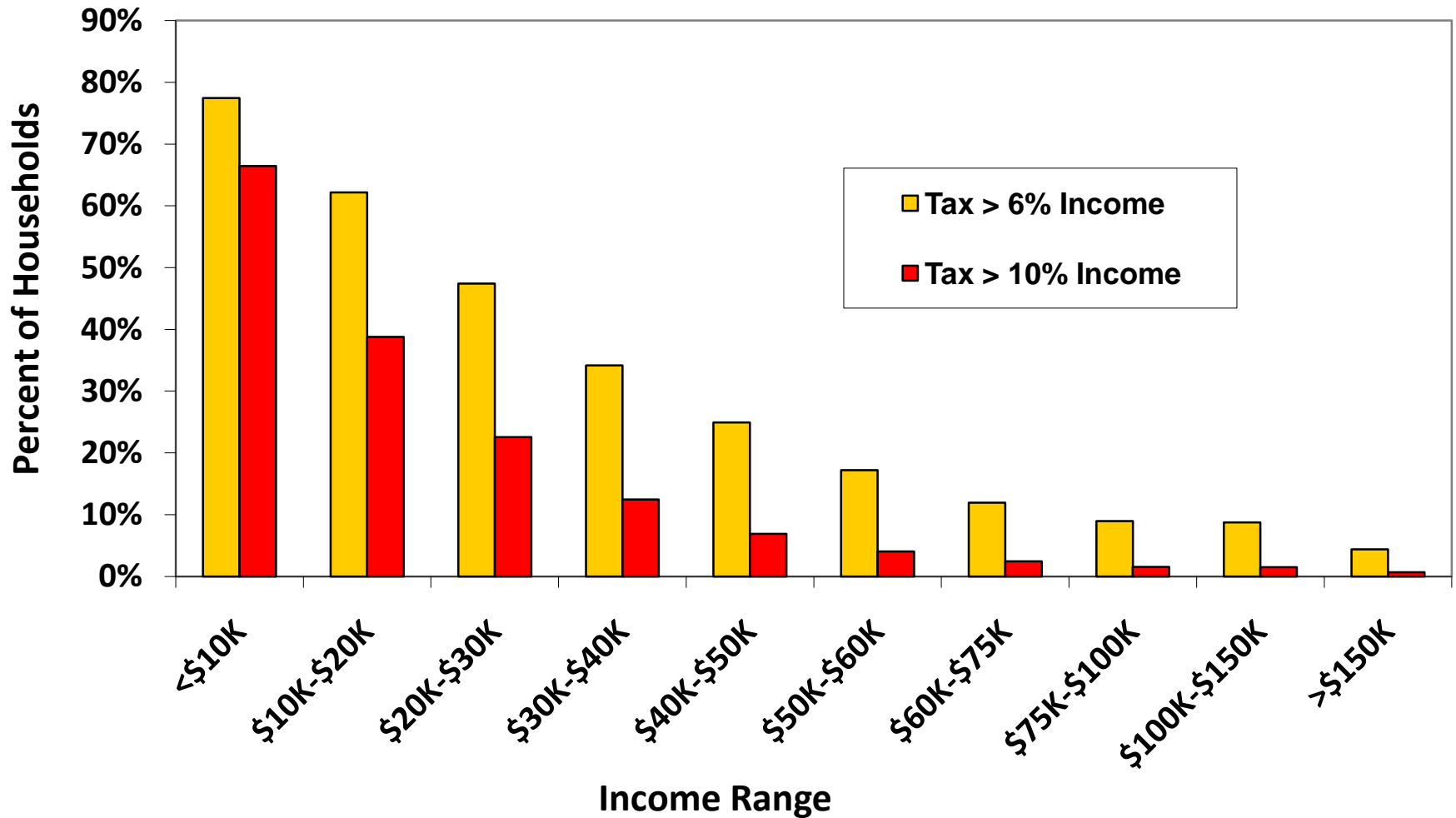
Three year averages  
FY 2006-2008

# National Rank on Per Capita Personal Income 1985-2008



Source: Maine Development  
Foundation

## Percent of Maine Households with High Property Tax Burden, by Income

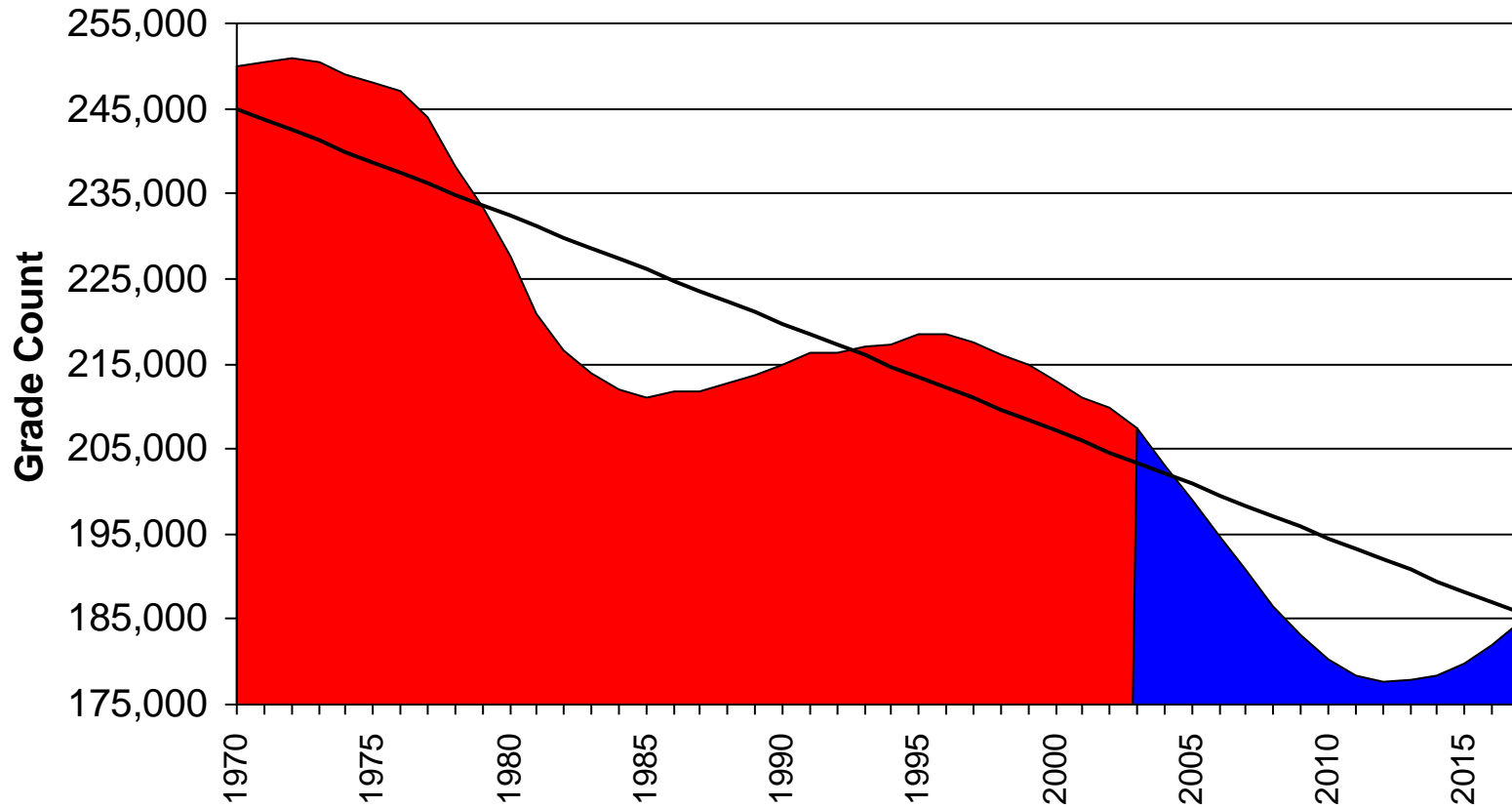


Source: Allen and Woodbury 2006.




# Resident Pupil Counts

1970 to 2003 Actual, 2004 to 2017 Projected

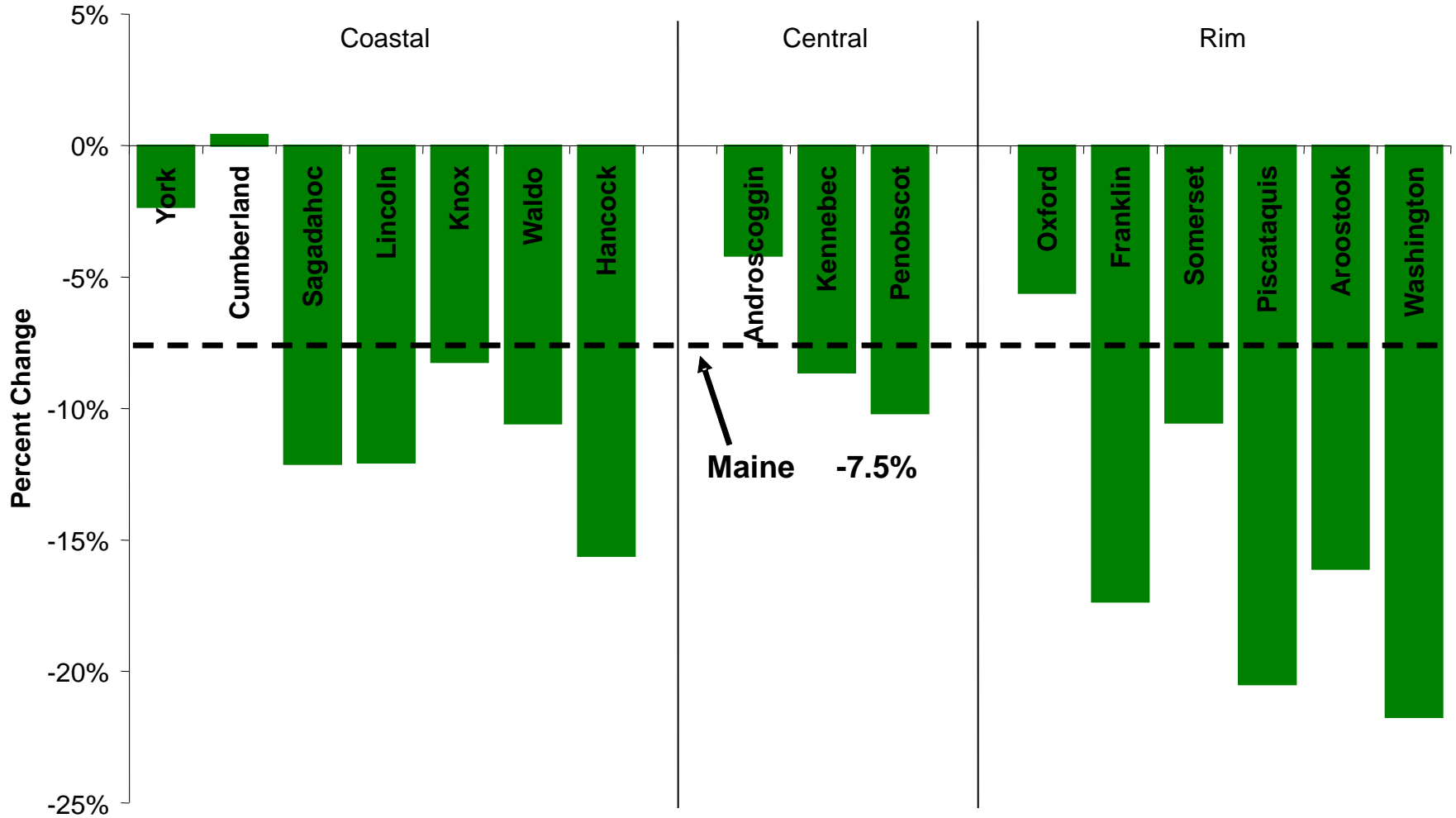


 Actual  
 Projected

 Trendline

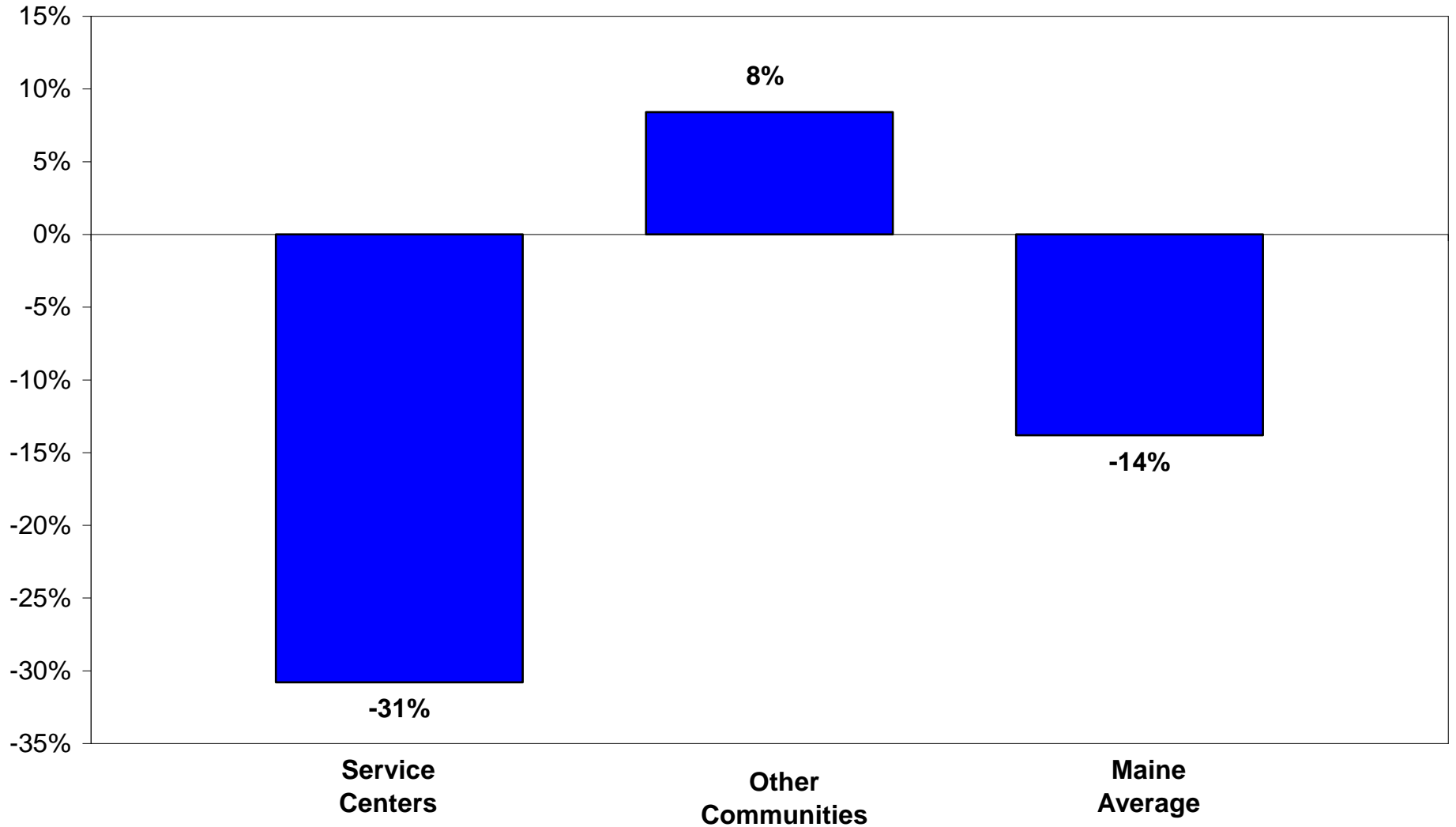
\* Does not include unorganized territories

## Change in School Enrollment Percent, 1996-2005



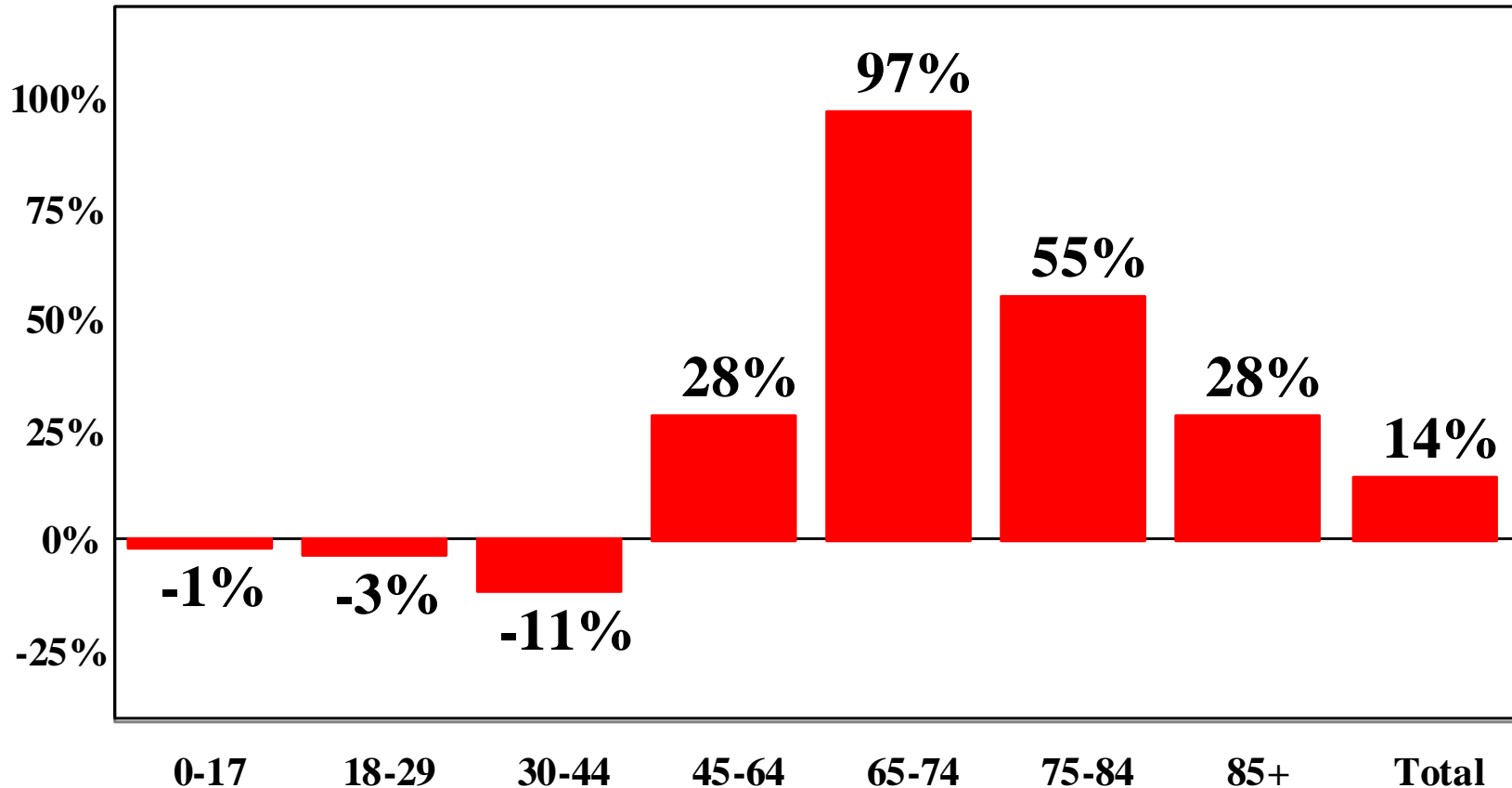
Source: Maine Development  
Foundation

# Percent Change in School Enrollment 1970-2002



Source: Maine Development  
Foundation

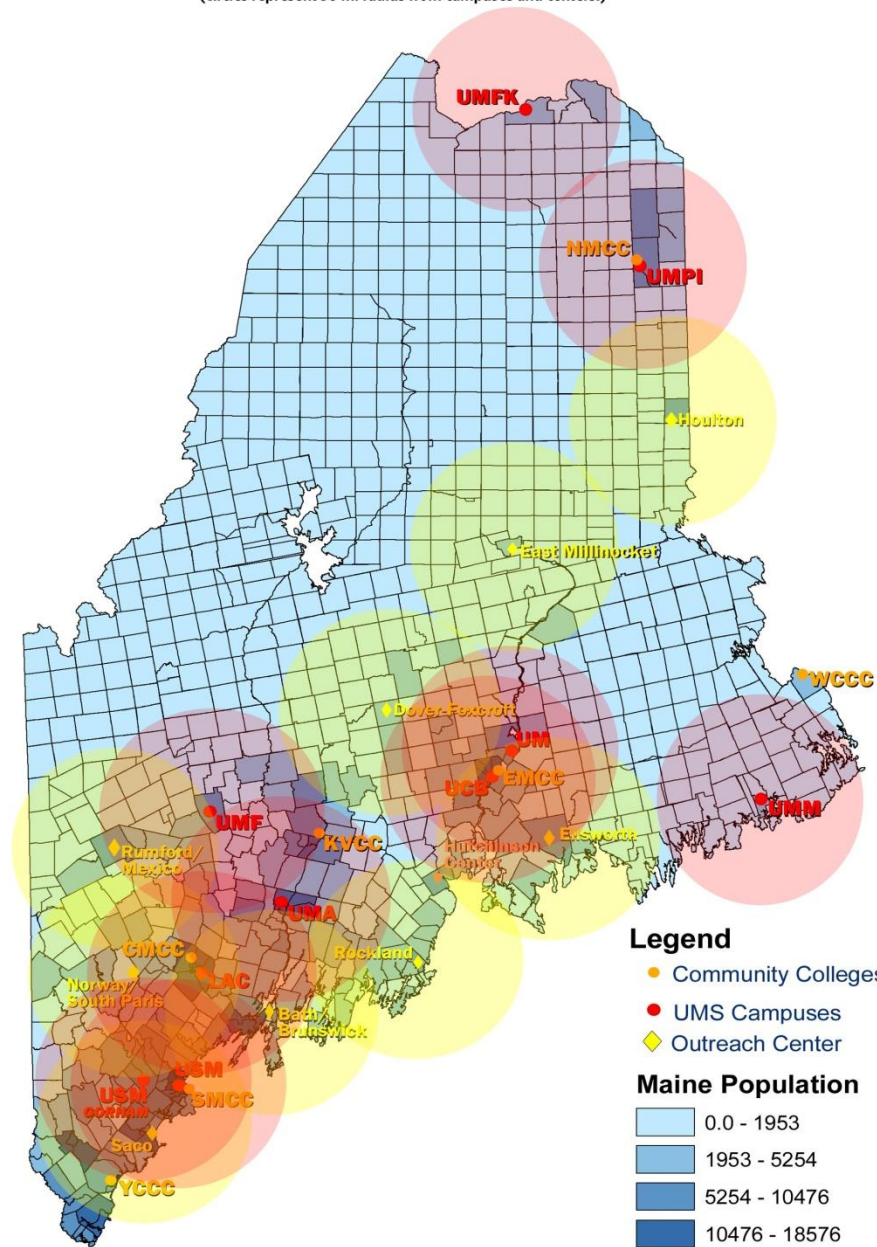
# Percent Population Change by Age Cohort Maine 1999 to 2025



Source: Maine Development  
Foundation

# Higher Education Sites in Maine

(Circles represent 30 mi radius from campuses and centers.)



Based on 2000 Census  
 Produced by  
 Department of Spatial Information Science and Engineering  
 University of Maine

# References

Dr. Richard Woodbury

Dr. David Silvernail

Laurie Lachance, Maine Development  
Foundation

“Meeting New Challenges, Setting  
New Directions: Task Force Report”